

HYGENEX



Stainless Steel Furniture For Hospitals

Redefining Infection Control



Fit Out Your Sluice Room

Stainless steel furniture is just as vital to your hospital's sluice room as the bedpan washers or pulp macerators you use to dispose of human waste.

Slop hoppers, sinks, janitorial units and hand basins are all necessary requirements for efficient and sanitary operations.

Human waste is one of the most prevalent carriers of dangerous bacteria in your hospital; so it's crucial to have a sluice room environment that is easy to keep sanitary.

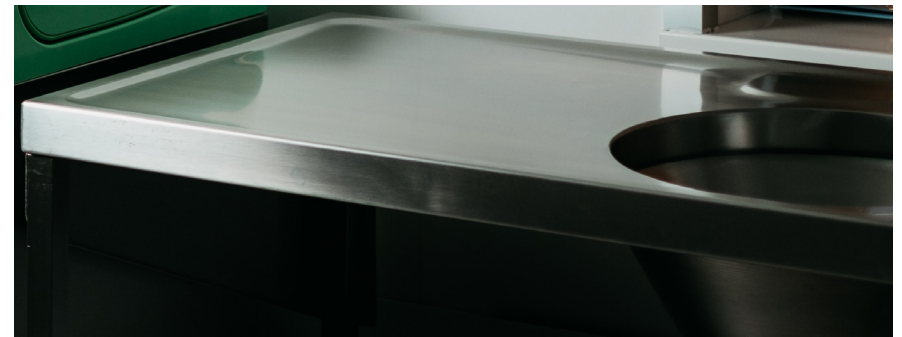
By equipping your sluice room with stainless steel fixtures and fittings, you can take care of infection control from the ground up, keeping your patients and staff safe from devastating HCAs.

All surfaces in a sluice room must be able to be thoroughly cleaned, or they could harbour bacteria and become the breeding ground for dangerous pathogens.

The smooth surfaces and clean welds on stainless steel furniture mean that microbes can find no place to hide; there are seldom any crevices where germs can become trapped and difficult to remove.

Similarly, stainless steel is corrosion-resistant, allowing for strong cleaning agents to be used without risking degrading the metal, meaning you can keep your ward's sluice room infection free.

Hygenex supplies a wide range of high-quality stainless steel equipment for hospital sluice rooms. These come in standard sizes, 304 grade stainless steel and are HTM64 compliant. We can also supply in higher grade 316 stainless steel on request, which is designed for particularly challenging environments.



Why Choose Hygenex Stainless Steel Furniture?



Highest quality products



Range of products to suit various budgets



2-year guarantee



Advice on sluice room layout and choice of equipment



Free site survey to ensure correct product specification.



HTM64 compliant solutions



Installation available



Rapid delivery times

1

A single supplier for all your sluice room needs



Dedicated account manager



Made in Britain

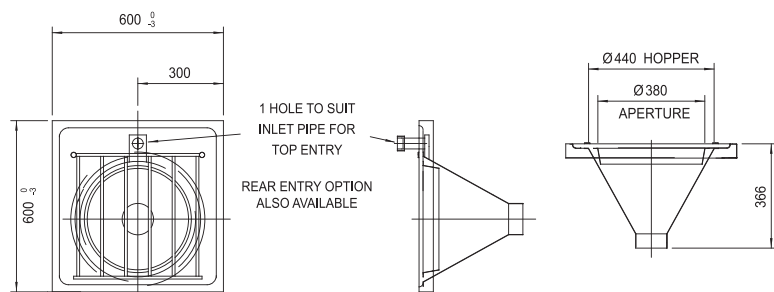
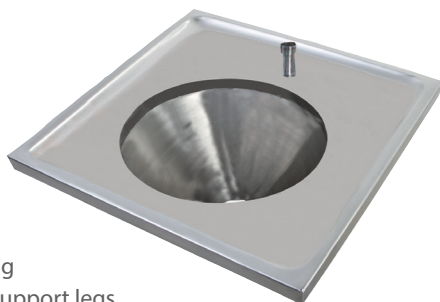


The Hygenex Range

Slop Hopper

For general disposal and cleaning purposes.

- HTM64 Compliant
- 304 grade stainless steel
- 360° rim flush action
- 9 litre stainless steel cistern
- Lever action flush handle
- Stainless steel flush pipe
- Anti-drip edges
- Cantilever brackets for wall-fixing
- Stainless steel adjustable front support legs
- 110mm stainless steel P trap
- Earthing terminal
- Overall dimensions from top of cistern to floor:
1270mm (h) x 600mm (w) x 600mm (d)



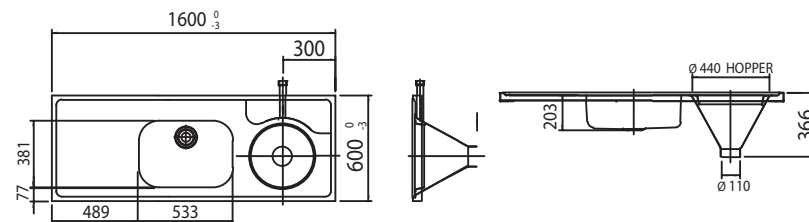
Options and extras:

- Optional extra: additional bend to form S trap
- Plastic pipework and cistern (lower cost option)

Combined Slop Hopper, Work Surface and Sink

Combining a disposal hopper with a useful multi-purpose work surface and deep sink.

- HTM64 Compliant
- 304 grade stainless steel
- 360° rim flush action
- 9 litre stainless steel cistern
- Lever action flush handle
- Stainless steel flush pipe
- Anti-drip edges
- Cantilever brackets for wall-fixing
- Stainless steel adjustable front support legs
- 110mm stainless steel P trap
- Earthing terminal
- Sink waste, plug and chain
- 200mm projection single bib taps (pair)
- Standard length: 1600mm (other lengths available on request).
- Overall dimensions from top of cistern to floor:
1270mm (h) x 1600mm (w) x 600mm (d)



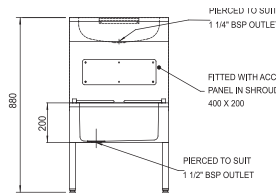
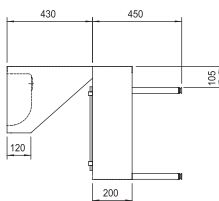
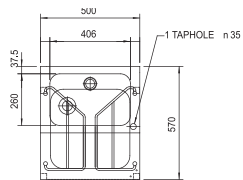
Options and extras:

- Optional extra: additional bend to form S trap
- Right or left-hand work surface
- Plastic pipework (lower cost option)

Janitorial Unit

Combines both a wash hand basin and a facility for filling and emptying buckets.

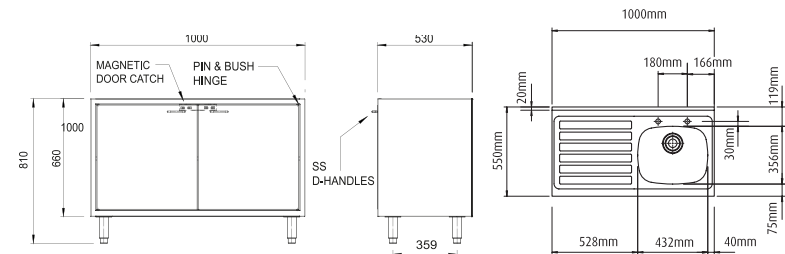
- HTM64 Compliant
- 304 grade stainless steel
- Stainless steel wash hand basin complete with waste, plug and chain
- Stainless steel bucket sink complete with waste, plug and chain
- Stainless steel hinged bucket grid
- 200mm projection single bib taps (pair)
- Rear legs inset to allow for passage of pipes and services
- Adjustable feet to cope with uneven floor surfaces.
- Overall dimensions from top of cistern to floor: 880mm (h) x 500mm (w) x 570mm (d)



Sink and Storage Cabinet

Comprising a stainless steel sink, storage cupboard and work surface.

- HTM64 Compliant
- 304 grade stainless steel
- Deep stainless steel sink suitable for filling buckets
- 200mm projection single bib taps (pair)
- Sink waste, plug and chain
- Anti-drip edges
- Lockable storage cupboard with hinged doors
- Cut-out to rear to allow for passage of pipes and services
- Adjustable feet to cope with uneven floor surfaces
- Earthing terminal
- Overall dimensions from top of cistern to floor: 825mm (h) x 1000mm (w) x 550mm (d)



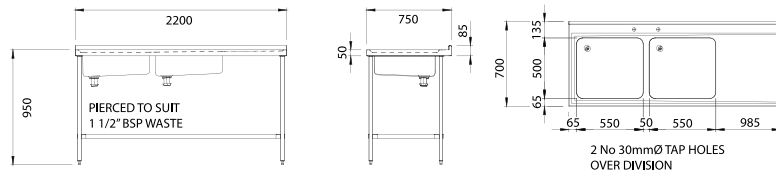
Options and extras:

- Right- or left-hand work surface
- Optional extra: cam lock for safe and secure storage of chemicals

Endoscopy Sink

For the cleaning and rinsing of endoscopy equipment.

- HTM64 Compliant
- Manufactured from 316 grade stainless steel
- Twin trough
- Electromechanical rise and fall mechanism for comfortable use
- Chrome plated, wall mounted, handheld spray
- Pre-wash tap
- Stand and undershelf
- Overall dimensions: 950mm (h) x 2200mm (w) x 700mm (d)



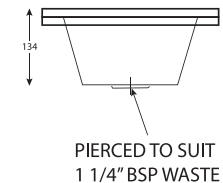
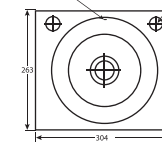
Small Wash Hand Basin

- 304 grade stainless steel
- Apron support for wall-fixing
- Lever action bib tap 3" levers (pair)
- Waste, plug and chain
- Dimensions: 134mm (h) x 305mm (w) x 265mm (d)



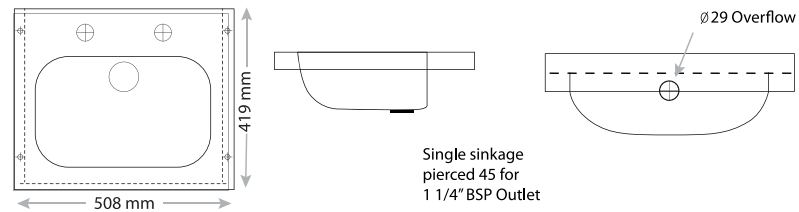
PULL CHAIN HOLE
6mm dia.

30mm dia.
TAPHOLES



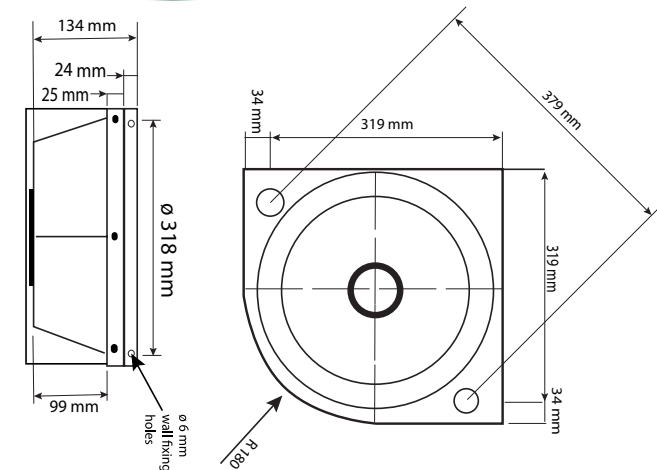
Knee Operated Hand Basin

- 304 grade stainless steel
- Apron support for wall-fixing
- Lever action bib tap 3" levers (pair)
- Waste, plug and chain
- Dimensions: 130mm (h) x 500mm (w) x 420mm



Corner Wash Hand Basin

- 304 grade stainless steel
- Apron support for wall-fixing
- Lever action bib tap 3" levers (pair)
- Waste, plug and chain
- Dimensions: 99mm (h) x 420mm (w) x 420mm (d)



Additional Sluice Room Accessories

Along with stainless steel furniture and vital waste disposal machinery, your sluice room will require many additional fixtures and fittings to help operations run smoothly and control the spread of infection.

As a full-service sluice room provider, we are able to supply the following:

Glove Dispenser



Wall Rack



Pedal Bin



1000mm Shelves



1500mm Shelves



Wall Cabinet



Soap Dispenser



Paper Towel Dispenser



Your Complete Sluice Room Partner

Hygenex is a subsidiary company of DDC Dolphin and we are here for all your hospital's sluice room requirements:

As a full-service sluice room provider, we are able to supply the following:



Medical pulp macerators



Bedpan washer disinfectors



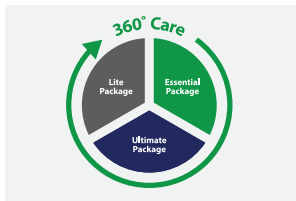
Incontinence product macerators



Machine servicing



Hygenex consumables – including machine chemicals and pulp bedpans



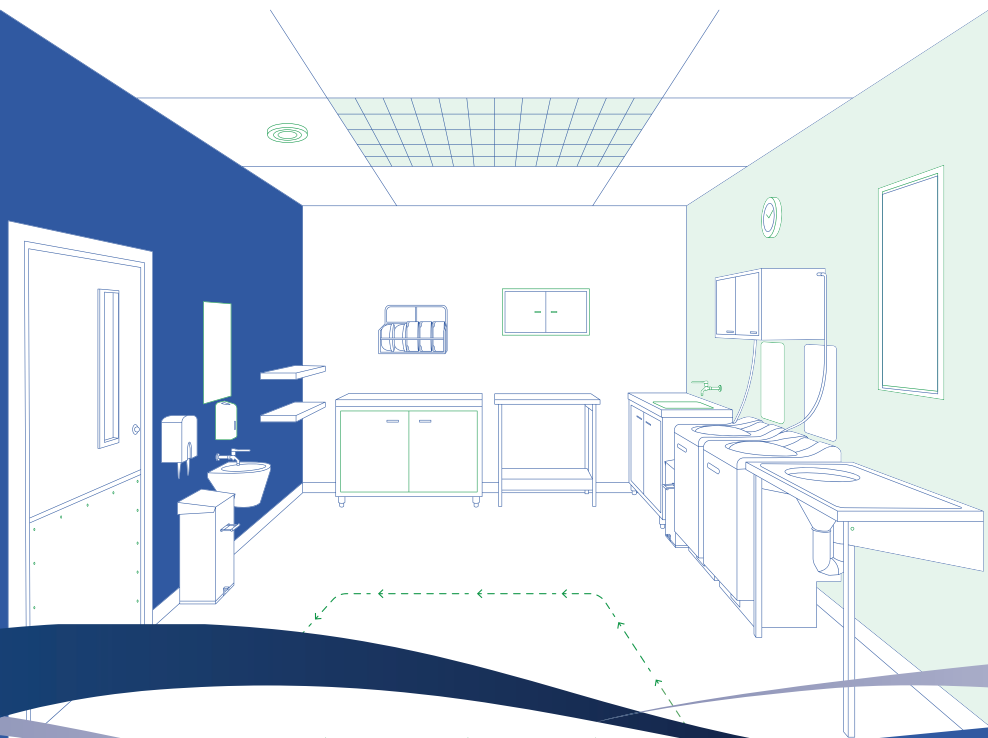
Machine financing packages



Repairs



Stainless steel furniture



Hygenex Ltd
The Fulcrum,
Vantage Way,
Poole,
Dorset,
BH12 4NU



www.hygenex.co.uk



+44 (0) 01202 731555



sales@hygenex.co.uk



Accreditations



Certificate No. 1161
02/2019

