

# **HYGENEX**



## **Stainless Steel Furniture For Care Homes**

**Redefining Infection Control**





# Fit Out Your Sluice Room

**Stainless steel furniture is just as vital to your care home's sluice room as the bedpan washers or pulp macerators you use to dispose of human waste.**

Slop hoppers, sinks, janitorial units and hand basins are all necessary requirements for efficient and sanitary operations.

Most nursing home residents require a high level of personal care, which will often involve the use of bedpans, urinals, incontinence pads and commode pots. Due to the communal nature of care homes, the cross contamination risk is high; so it's crucial your sluice room is equipped to quickly dispose of these items and be kept highly sanitary. By equipping your sluice room with stainless steel fixtures and fittings, you can take care of infection control from the ground up.

All surfaces in a sluice room must be able to be thoroughly cleaned; or they could harbour bacteria and become the breeding ground for dangerous pathogens.

The smooth surfaces and clean welds on stainless steel furniture mean that microbes can find no place to hide; there are seldom any crevices where germs can become trapped and difficult to remove.

Similarly, stainless steel is corrosion-resistant, allowing for strong cleaning agents to be used without degrading the metal.

DDC Dolphin supplies a wide range of high-quality stainless steel equipment for care home sluice rooms. These come in standard sizes and in 304 grade stainless steel. We can also supply in grade 316 on request.



# Why Choose Hygenex Stainless Steel Furniture?



**Highest quality products**



**Range of products to suit various budgets**



**2-year guarantee**



**Advice on sluice room layout and choice of equipment**



**Free site survey to ensure correct product specification.**



**Installation available**



**Rapid delivery times**

**1**

**A single supplier for all your  
sluice room needs**



**Dedicated account manager**



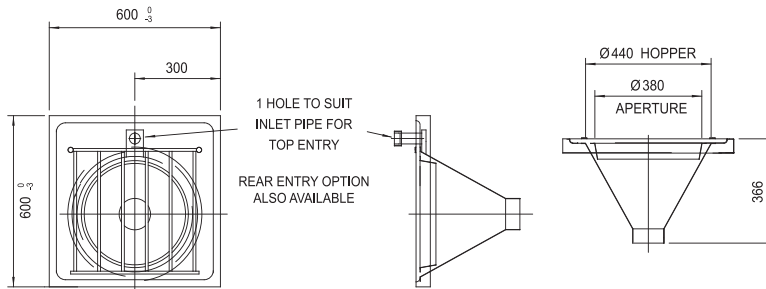
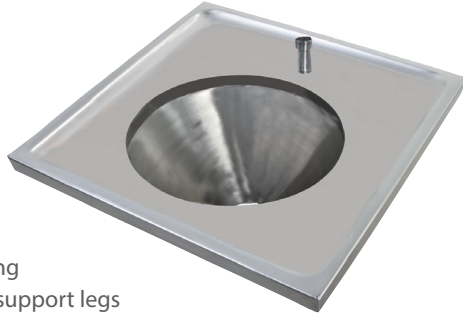
**Made in Britain**

# The Hygenex Range

## Slop Hopper

For general disposal and cleaning purposes.

- HTM64 Compliant
- 304 grade stainless steel
- 360° rim flush action
- 9 litre stainless steel cistern
- Lever action flush handle
- Stainless steel flush pipe
- Anti-drip edges
- Cantilever brackets for wall-fixing
- Stainless steel adjustable front support legs
- 110mm stainless steel P trap
- Earthing terminal
- Overall dimensions from top of cistern to floor:  
1270mm (h) x 600mm (w) x 600mm (d)



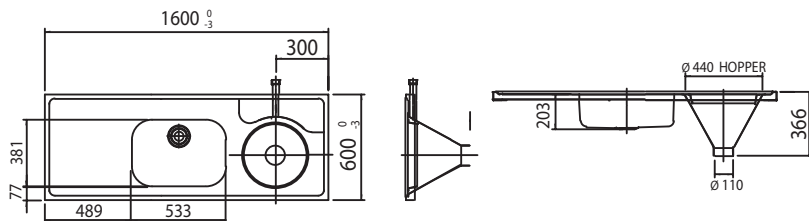
## Options and extras:

- Optional extra: additional bend to form S trap
- Plastic pipework (lower cost option)

## Combined Slop Hopper, Work Surface and Sink

Combining a disposal hopper with a useful multi-purpose work surface and deep sink.

- HTM64 Compliant
- 304 grade stainless steel
- 360° rim flush action
- 9 litre stainless steel cistern
- Lever action flush handle
- Stainless steel flush pipe
- Anti-drip edges
- Cantilever brackets for wall-fixing
- Stainless steel adjustable front support legs
- 110mm stainless steel P trap
- Earthing terminal
- Sink waste, plug and chain
- Economy mixer tap
- Standard length: 1600mm (other lengths available on request).
- Overall dimensions from top of cistern to floor:  
1270mm (h) x 1600mm (w) x 600mm (d)



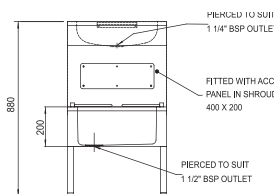
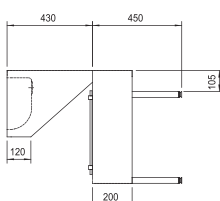
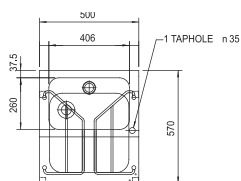
### Options and extras:

- Optional extra: additional bend to form S trap
- Right- or left-hand work surface
- Plastic pipework and cistern (lower cost option)

## Janitorial Unit

Combines both a wash hand basin and a facility for filling and emptying buckets.

- 304 grade stainless steel
- Stainless steel wash hand basin complete with waste, plug and chain
- Stainless steel bucket sink complete with waste, plug and chain
- Stainless steel hinged bucket grid
- Monobolic swivel mixer tap
- Rear legs inset to allow for passage of pipes and services
- Adjustable feet to cope with uneven floor surfaces.
- Overall dimensions from top of cistern to floor: 880mm (h) x 500mm (w) x 570mm (d)

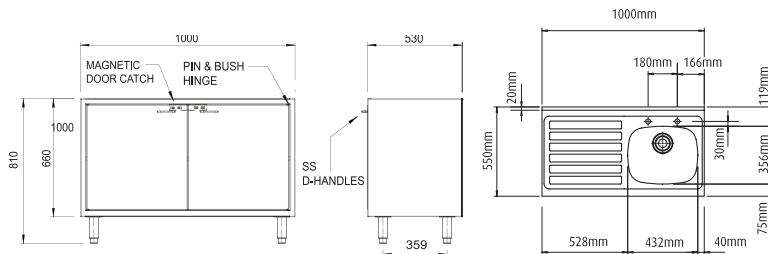




## Sink and Storage Cabinet

Comprising a stainless steel sink, storage cupboard and work surface.

- 304 grade stainless steel
- Deep stainless steel sink suitable for filling buckets
- Economy mixer tap
- Sink waste, plug and chain
- Anti-drip edges
- Lockable storage cupboard with hinged doors
- Cut-out to rear to allow for passage of pipes and services
- Adjustable feet to cope with uneven floor surfaces
- Earthing terminal
- Overall dimensions from top of cistern to floor: 825mm (h) x 1000mm (w) x 550mm (d)



### Options and extras:

- Right- or left-hand work surface
- Optional extra: cam lock for safe and secure storage of chemicals

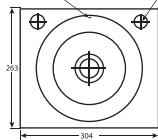
## Small Wash Hand Basin

- 304 grade stainless steel
- Apron support for wall-fixing
- Lever action bib tap 3" levers (pair)
- Waste, plug and chain
- Dimensions: 134mm (h) x 305mm (w) x 265mm (d)



PULL CHAIN HOLE  
6mm dia.

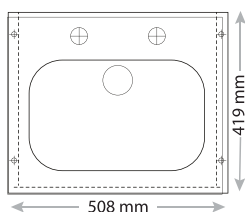
30mm dia.  
TAPHOLES



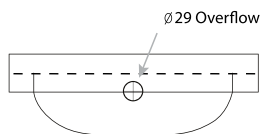
PIERCED TO SUIT  
1 1/4" BSP WASTE

## Knee Operated Hand Basin

- 304 grade stainless steel
- Apron support for wall-fixing
- Lever action bib tap 3" levers (pair)
- Waste, plug and chain
- Dimensions: 130mm (h) x 500mm (w) x 420mm

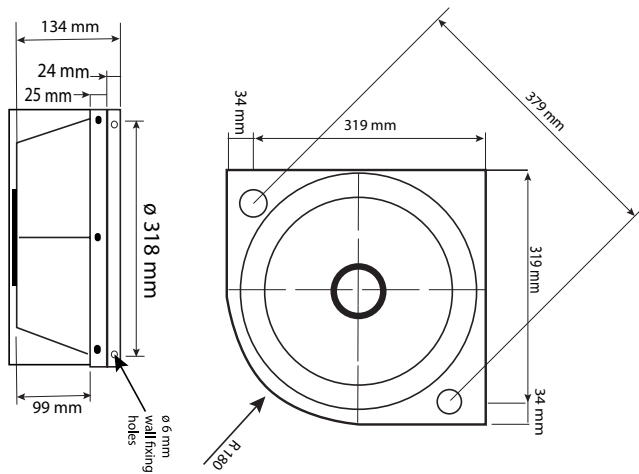


Single sinkage  
pierced 45 for  
1 1/4" BSP Outlet



## Corner Wash Hand Basin

- 304 grade stainless steel
- Apron support for wall-fixing
- Lever action bib tap 3" levers (pair)
- Waste, plug and chain
- Dimensions: 99mm (h) x 420mm (w) x 420mm (d)



# Additional Sluice Room Accessories

Along with stainless steel furniture and vital human waste disposal machinery, your sluice room will require many additional fixtures and fittings to help operations run smoothly and control the spread of infection.

As a full-service sluice room provider, we are able to supply the following:

**Glove Dispenser**



**Wall Rack**



**Pedal Bin**



**1000mm Shelves**



**1500mm Shelves**



**Wall Cabinet**



**Soap Dispenser**



**Paper Towel Dispenser**



# Your Complete Sluice Room Partner

Hygenex is a subsidiary company of DDC Dolphin and we are here for all your care home's sluice room requirements:



**Bedpan washer disinfectors**



**Medical pulp macerators**



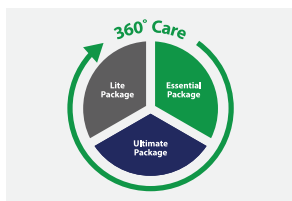
**Incontinence product macerators**



**Machine servicing**



**Hygenex consumables –**  
including machine chemicals and pulp bedpans



**Machine financing packages**



**Repairs**



**Stainless steel furniture**

Contact us today :



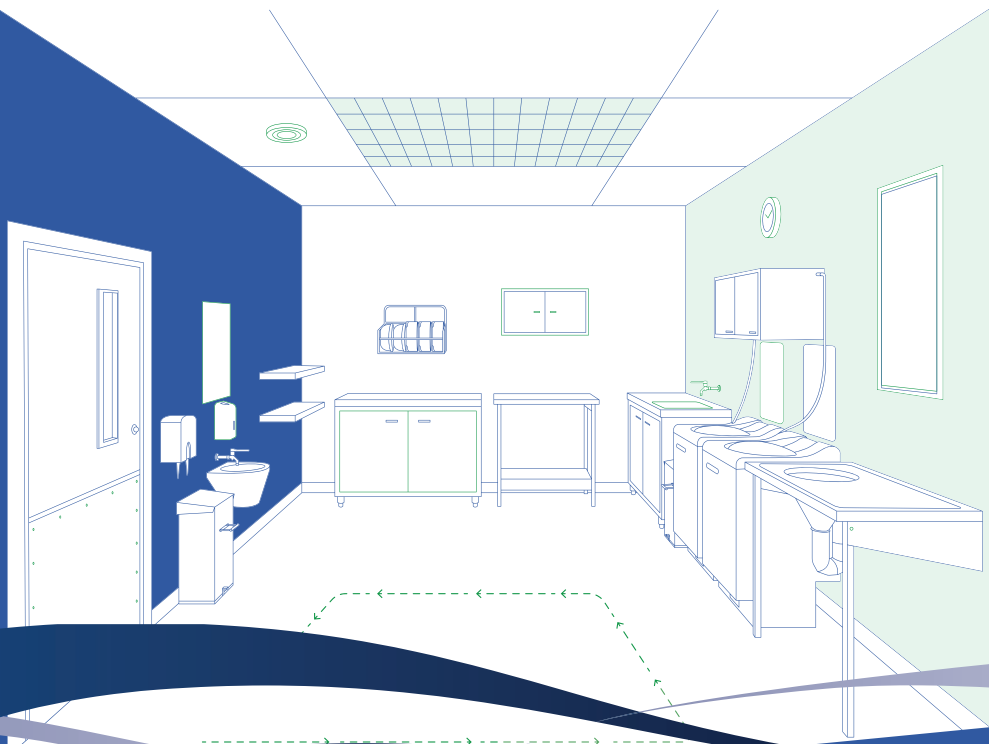
+44 (0) 1202 731555



[sales@hygenex.co.uk](mailto:sales@hygenex.co.uk)



[www.hygenex.co.uk](http://www.hygenex.co.uk)



## Hygenex Ltd

The Fulcrum,  
Vantage Way,  
Poole,  
Dorset,  
BH12 4NU



[www.hygenex.co.uk](http://www.hygenex.co.uk)



+44 (0) 01202 731555



[sales@hygenex.co.uk](mailto:sales@hygenex.co.uk)



## Accreditations



Certificate No. 1101  
ISO 9001

