

Peeling back true saving with DDC Dolphin wipes...

Can you really afford not to switch?



LONG TERM BENEFITS WITH DDC DOLPHIN WIPES Vs LONG TERM COSTS WITH POLYPROPYLENE WIPES

- Better cost savings -

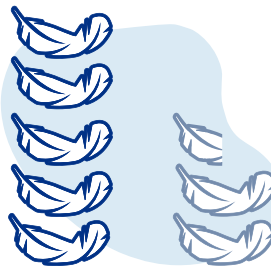
DDC Dolphin Wipes are 5 x more absorbent than polypropylene based wipes as they do not contain any plastic. Plastic will not soak up fluid! 5 x more absorption means you'll use 4 less wipes to soak up the same amount of fluids.
Less product usage = cost savings.



- Better for the patient -

DDC Dolphin Wipes are 50% softer

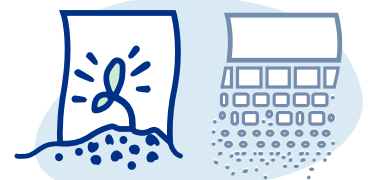
than polypropylene alternatives; therefore this superior product ensures a nicer experience for both patients and clinicians alike.



- Better for the planet -

DDC Dolphin Wipes are eco-friendly and **will completely break down into 100% organic matter.**

Polypropylene based wipes will eventually break down into microplastics, causing serious threat to the environment.



- Better for staff -

From surface cleaning to intimate personal care, DDC Dolphin Wipes makes light work of a range of dirty tasks whilst being quick and easy to dispose of; **helping save vital nursing time.**



- Better waste disposal -

DDC Dolphin Wipes are fully flushable

without causing drainage blockages, thus reducing maintenance time, costs and inconvenience.



DDC Dolphin wipes are designed to care for those who need them, as well the planet.



A choice of wet or dry wipes, to suit your needs.

Peeling back true saving with DDC Dolphin wipes...

Can you really
afford not to switch?



DDC DOLPHIN ECO-FRIENDLY PATIENT WIPES

What Makes DDC Dolphin Wipes Different?

To put it simply, they are fully compostable – they completely break down and disperse into 100% organic matter when disposed of in bedpan washers, macerators, slop hoppers or toilets.

Whilst many competitor products can claim that they are biodegradable, this simply means that they will eventually break down into smaller pieces by natural processes. In reality what this means is they decompose into microplastics, further polluting our already dangerously damaged natural environment.

- Advanced non-woven 100% cellulosic material
- Passed all 7 tests for EDANA & INDA standards of flushability
- 100% biodegradable, compostable, dispersible, flushable, maceratable & plastic free
- Unique market-leading strength and performance
- Suitable for use on all areas of the body including intimate areas
- Suitable for use on all skin types and ages from newborn to the elderly

Eco-Friendly Skin Cleansing Wet Wipes

For use on hands, body and face and suitable for all skin types, including sensitive skin.

- 30 wipes per pack
- Dermatologically tested and hypoallergenic; suitable for all skin types
- Gentle and highly effective skin cleanser
- Soap, lanolin and alcohol free
- Individual wipe size 200 x 160 mm

Eco-Friendly Patient Dry Wipes

An all-purpose wipe suitable for general surface and skin cleansing.

- 75 wipes per pack
- Dual application wipes for use on surfaces or skin
- Suitable for use with detergents, disinfectants and skin cleansing products
- Highly absorbent
- Individual wipe size 270 x 260mm



DDC Dolphin wipes are designed to care for those who need them, as well the planet.



A choice of wet or dry
wipes, to suit your needs.