



Managed Service Offering for Hospitals

Introducing our new all-inclusive **Managed Service Solution**, specifically designed for hospitals across the UK.

This comprehensive offering includes the supply of all equipment, service, maintenance, and consumables, all bundled into a single, predictable monthly payment.



[DDCDOLPHIN.COM](https://ddcdolphin.com)

With DDC's Managed Service Solution, You're in Safe Hands

DDC is excited to introduce our comprehensive Managed Service Offering, specifically designed for hospitals across the UK.

We understand the critical need for reliable, high-quality medical equipment and the vital importance of uninterrupted service and maintenance in safeguarding patient care. Our new Managed Service Offering covers everything—equipment, service, maintenance, and chemicals*—bundled into a single, predictable monthly cost.

As the healthcare landscape evolves, hospitals face growing challenges that threaten their operational efficiency, financial stability, and patient care quality. Unpredictable maintenance costs, supply chain disruptions, and operational downtime are just a few of the pressures that have intensified in recent years.

Hospital management teams often struggle with the unpredictability of maintenance expenses. Aging infrastructure and medical equipment can lead to unexpected breakdowns, causing costly repairs that further strain already tight budgets.

With DDC's Managed Service Offering, hospitals achieve financial predictability and gain peace of mind, knowing that a dedicated partner is managing their operational challenges. This allows management teams to spend less time worrying about emergencies and more time focusing on improving patient outcomes and elevating the overall quality of care.



Why Choose DDC:

Unmatched Expertise & Innovation

With over 30 years of experience, **DDC** leads in manufacturing sluice room equipment, including bedpan washer disinfectors, medical pulp macerators, and incontinence macerators.

Our engineering expertise keeps us at the cutting edge, allowing us to continually improve our products to meet the highest standards.

Committed to a sustainable future, **DDC** minimises environmental impact, strengthens supply chain resilience, and supports the move towards a lower carbon economy.

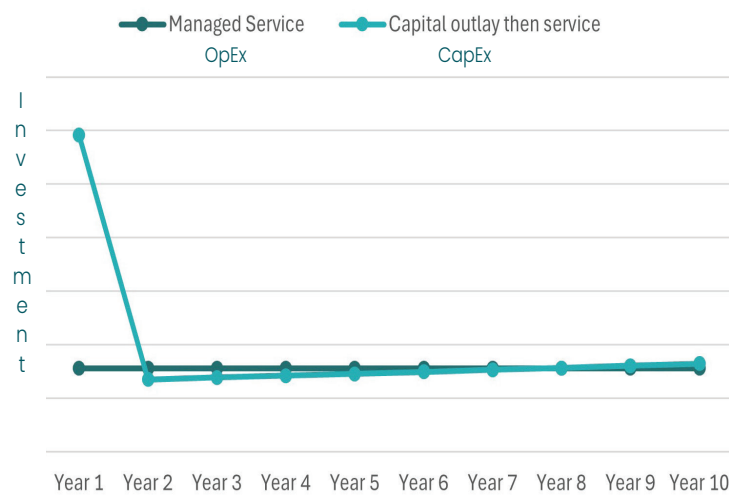
Our ISO 14001 certification underpins our dedication to both customers and the climate.

We work closely with healthcare professionals to ensure our equipment exceeds industry demands, boosting infection prevention and helping our partners achieve net zero goals.

Value Based Procurement

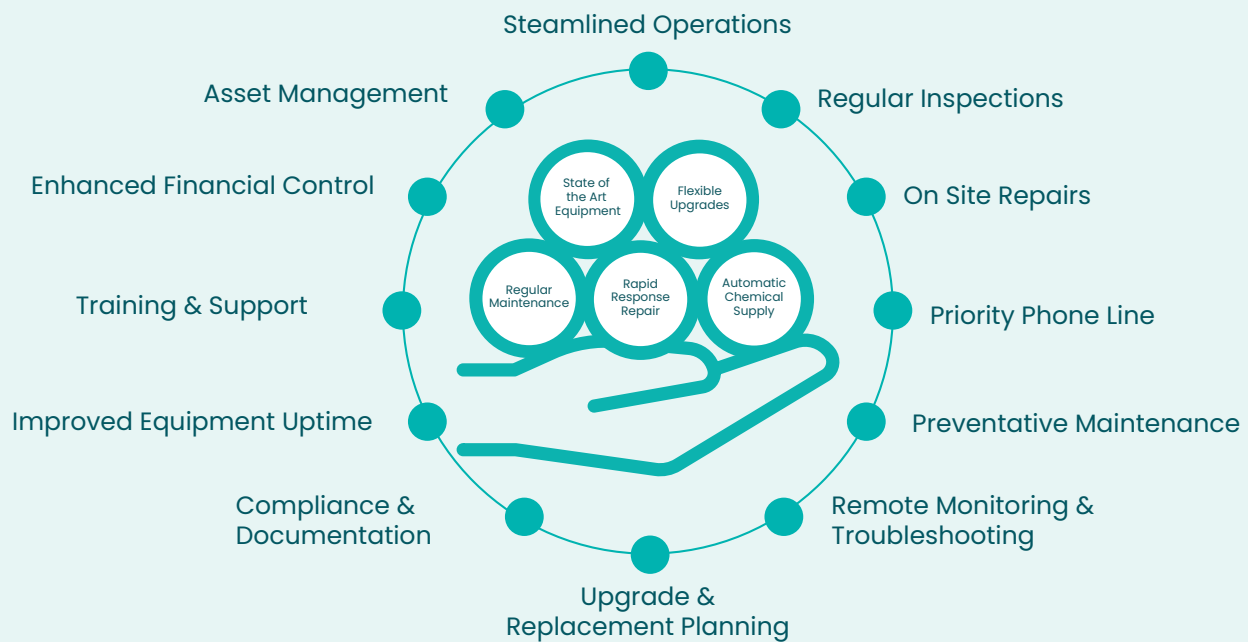
Our products enhance hygiene and efficiency, minimising infection risks, enabling healthcare professionals to dedicate more time to caring for patients.

10 Year Comparison



* This includes an initial annual supply of 12 bottles. Once the supply is depleted, additional purchases will be required. We will provide another 12 bottles each year as part of the ongoing service.

At exceptional Value For Money, unlock the benefits of our **Fully Managed Service**. Our plan includes:



All-Inclusive Managed Service Solution

This unique approach is designed to streamline your operations, reduce costs, and enhance the quality of care your hospital provides, all while giving you financial predictability and peace of mind. Additionally, by using newer equipment that consumes less water and energy, we help you minimise environmental impact. Fewer breakdowns also contribute to reducing CO2 emissions, supporting your sustainability goals. Plus, you'll benefit from a guaranteed 24-hour response time from locally based engineers, ensuring quick and reliable support whenever needed.**

State of the Art Equipment	<input checked="" type="checkbox"/>	Access to the latest bedpan washers or pulp macerators without the need for large upfront investment.
Flexible Upgrades	<input checked="" type="checkbox"/>	As technology advances, your hospital can upgrade to the latest equipment with minimal disruption and cost.
Regular Maintenance	<input checked="" type="checkbox"/>	Our managed services include scheduled maintenance to ensure your equipment operates at peak efficiency.
Rapid Response Repair	<input checked="" type="checkbox"/>	In the event of equipment failure, our expert technicians are on call 24/7 to provide immediate repair services, minimising down time.

DDC is not just another brand; we are a promise of quality, integrity, and innovation. By choosing DDC, you can make a difference today and for generations to come.

**Guaranteed 24-hour response is included within core business hours (Monday-Friday 8.30am-5pm). Evenings, weekends, and public holidays will be subject to non-inclusive call out and labour fees, terms and conditions will apply.

DDC



Certificate Number 1101
8001/14001



01202 731 555

INFO@DDCDOLPHIN.COM

DDCDOLPHIN.COM